



[info@arcdemir.com](mailto:info@arcdemir.com)  
[www.arcdemir.com](http://www.arcdemir.com)

**ARC GROUP** Iron & Steel  
Construction Production Industry &  
Trade Import Export Limited  
Company



## **FIELDS OF ACTIVITIES**

---

- STEEL TRADING
- CNC PLASMA CUTTING
- SHEET BENDING / CUTTING
- SANDBLASTING & SHOP PRIMER PAINTING
- WELDING SERVICE
- LIGHTENING POLE – GALVANISING PROCESS





# HOLLOW SECTIONS

## TUBES

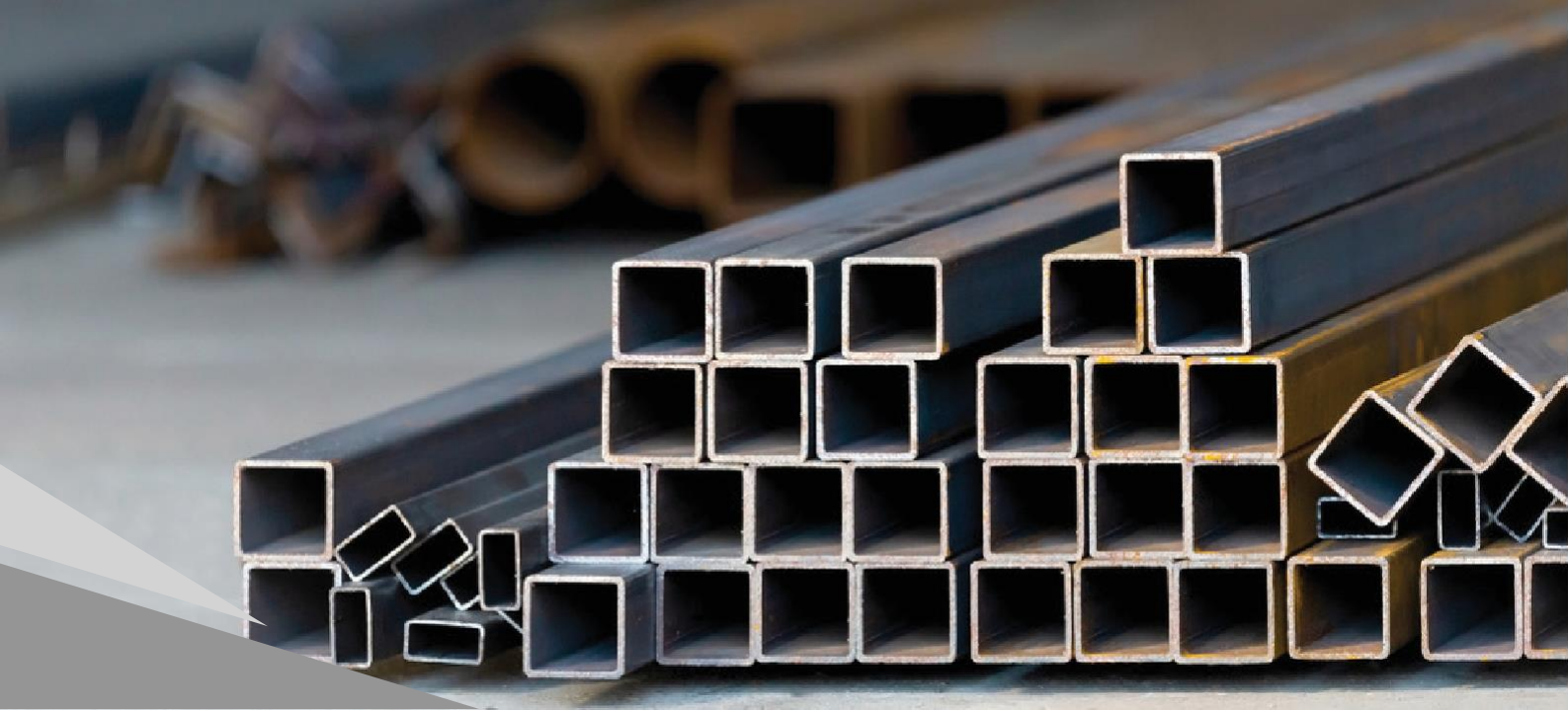
### ERW Tubes & Hollow Sections Production

*As Arc Iron, in addition to our standard products, we can design what you dream of, develop your designs and produce them.*





# HOLLOW SECTIONS TUBES



## SQUARE & RECTANGULAR SECTIONS

Hollow section members can be circular, square, or rectangular sections, although other shapes are available, such as elliptical. These sections are available with anti rust oil coating from inside & outside to ensure safe delivery to end customers.

<b>SHS (Square Hollow Sections) Sizes:</b>		
Wide	20 x 20 mm	400 x 400 mm
WT	1.6 mm	16.0 mm

<b>RHS (Rectangular Hollow Sections) Sizes:</b>		
Wide	50 x 20 mm	400 - 300 mm
WT	1.6 mm	16.0 mm

<b>Production Standards:</b>			
EN 10219	EN 10305	DIN 2395	ASTM A500

# HOLLOW SECTIONS TUBES



## ANTI-RUST PAINTED HOLLOW SECTIONS AND TUBES

It is used in all constructions aimed to increase corrosion resistance and provide protection to the product.

Hollow Section Sizes:				
Wide	20 x 20 mm	100 x 100 mm	20 x 30 mm	80 - 120 mm
WT	0.8 mm		8.0 mm	

Tubes Sizes:		
Wide	19 mm	168,3 mm
WT	0.8 mm	8.0 mm

Production Standards:			
EN 10219	EN 10305	DIN 2395	ASTM A500





# HOLLOW SECTIONS TUBES



## PRE-GALVANIZED HOLLOW SECTIONS AND TUBES

Widely used in construction, bridge, highway, windows of model steel door, machinery, chemical industry, supermarket goods shelf and so on.

Range:		
Outer Diameter	1/2"	8"
Wall Thickness	0,8 mm	6 mm



## INDUSTRIAL & CONSTRUCTION TUBES

Structural uses are common building and construction. In these industries, the building material is commonly referred to as steel tubes.

Range:		
Outer Diameter	1/2"	8"
Wall Thickness	0,8 mm	6 mm



# HOLLOW SECTIONS TUBES



## BLACK & GALVANIZES WATER PIPES

Açıklama gelmesi lazım. Açıklama gelmesi lazım. Açıklama gelmesi lazım.  
Açıklama gelmesi lazım. Açıklama gelmesi lazım. Açıklama gelmesi lazım.  
Açıklama gelmesi lazım.

Range:		
Outer Diameter	1/2"	8"
Wall Thickness	2,0 mm	5,4 mm

Production Standards:			
EN 10255	EN 10217	DIN 2440	ASTM A53



# SAW PIPES SEAMLESS PIPES



## SPIRAL WELDED STEEL PIPES

Açıklama gelmesi lazım. Açıklama gelmesi lazım. Açıklama gelmesi lazım. Açıklama gelmesi lazım. Açıklama gelmesi lazım. Açıklama gelmesi lazım.

Spiral Welded Steel Pipes:		
Outside Diameter	219 mm	3048 mm
Wall Thickness	4,0 mm	24 mm

Production Standards:			
API 5L	ISO 3183	EN 10208-2	GOST 20295





# SAW PIPES SEAMLESS PIPES



## SEAMLESS STEEL PIPES

It is used in all constructions aimed to increase corrosion resistance and provide protection to the product.

Hollow Section Sizes:			
Wide	20 x 20 mm	100 x 100 mm	80 - 120 mm
WT	0.8 mm		8.0 mm

Tubes Sizes:		
Wide	19 mm	168,3 mm
WT	0.8 mm	8.0 mm

Production Standards:			
EN 10219	EN 10305	DIN 2395	ASTM A500





## SAW PIPES SEAMLESS PIPES



### PRE-GALVANIZED HOLLOW SECTIONS AND TUBES

Widely used in construction, bridge, highway, windows of model steel door, machinery, chemical industry, supermarket goods shelf and so on.

	Range	
Outside Diameter	1/2"	8"
Wall Thickness	0,8 mm	6 mm



# STORAGE CONTAINER



# STORAGE CONTAINER



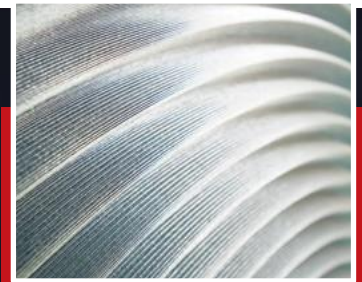
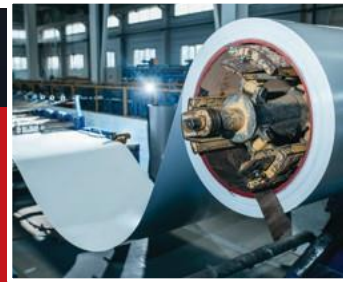


## **SHEET COILS**

*HRC-CR-HRP-DKP*

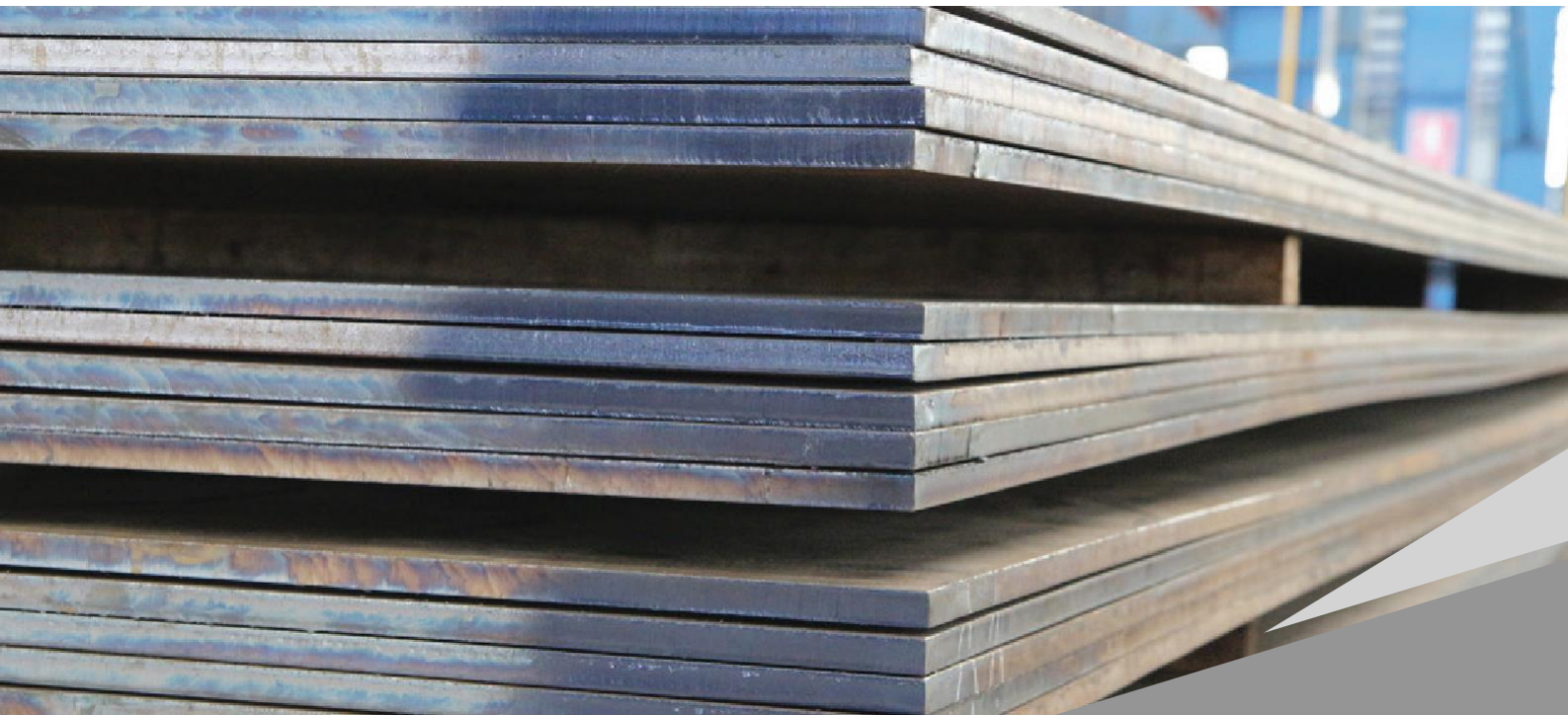
### **ERW Tubes & Hollow Sections Production**

*As Arc Iron, in addition to our standard products, we can design what you dream of, develop your designs and produce them.*





**SHEET COILS**  
HRC-CR-HRP-DKP

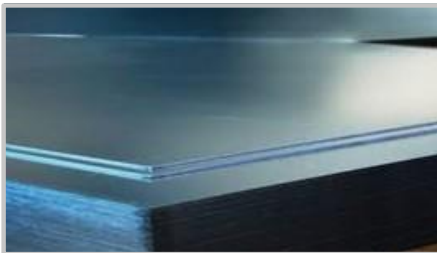


# SHEET COILS

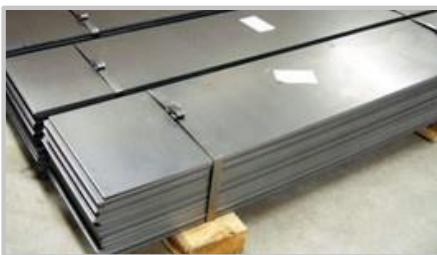
## HRC-CR-HRP-DKP



HRC SHEET		
Length	300 mm	12000 mm
Width	400 mm	3000 mm
Wall Thickness	1,5 mm	50 mm



DKP SHEET		
Length	300 mm	12000 mm
Width	400 mm	3000 mm
Wall Thickness	0,5 mm	2,0 mm



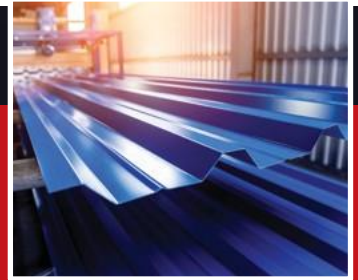
HRP SHEET		
Length	300 mm	6000 mm
Width	400 mm	3000 mm
Wall Thickness	1,5 mm	50 mm



**GLV-PAINTED**  
*CORRUGATED-TREAD*

**ERW Tubes & Hollow Sections Production**

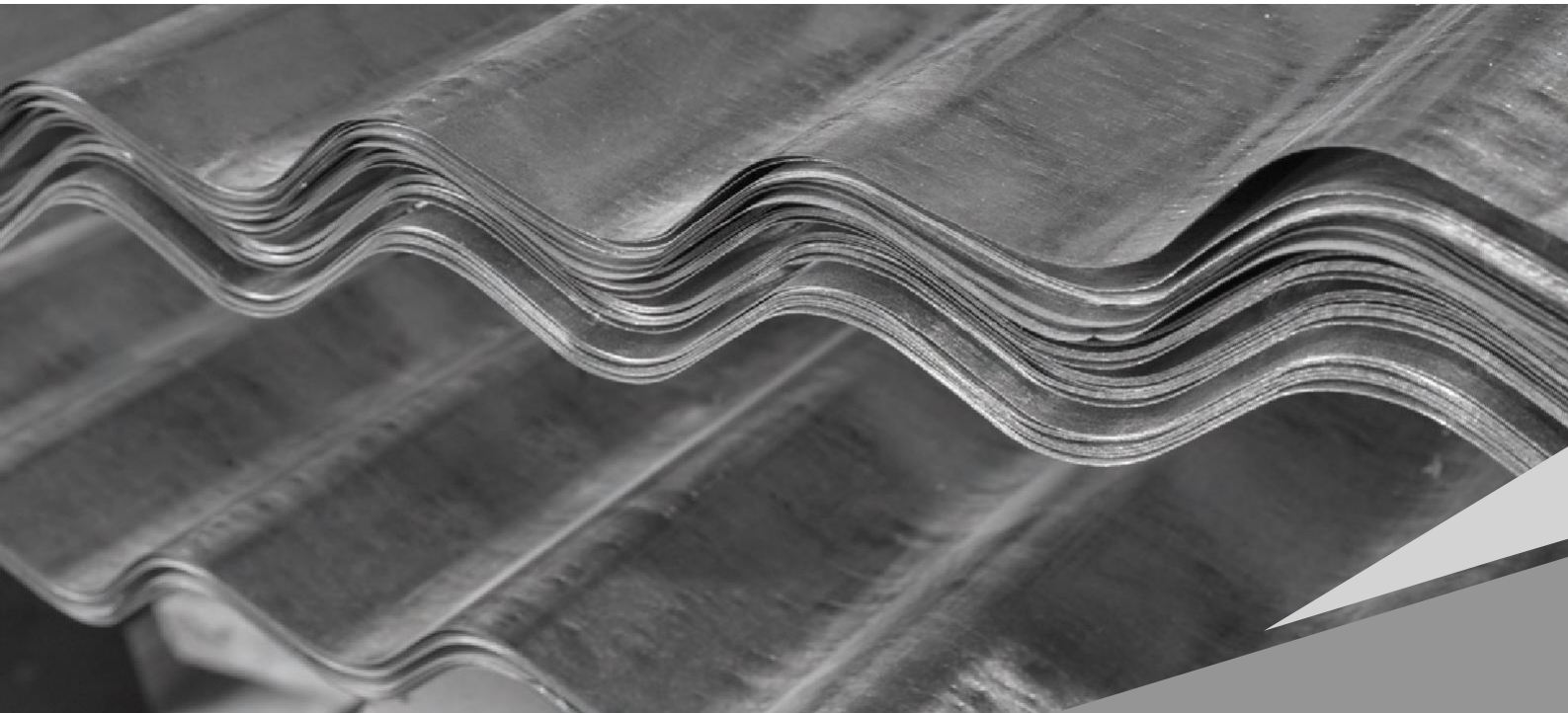
*As Arc Iron, in addition to our standard products,  
we can design what you dream of, develop your designs and produce them.*







**GLV-PAINTED**  
CORRUGATED-TREAD



# GLV-PAINTED CORRUGATED-TREAD



**PAINTED SHEET & COIL**



**GALVANIZED SHEET**



**CORRUGATED SHEET**



**TREAD PATTERN SHEET**



**EXPANDED SHEET**



**PAINTED CORRUGATED SHEET**



# Our Domestic Reference



## Some Local Reference



# Our Foreign Reference



*Some Foreign Local Reference*



# Thank you for your co-operation

+90(535) 879 05 72

+90(532) 450 89 32

+90(532) 288 46 51

[info@arcdemir.com](mailto:info@arcdemir.com)

[www.arcdemir.com](http://www.arcdemir.com)



Head Office:

Yeni Bağlıca Mah. Çambayırı Cad.  
Kozz Bağlıca Sitesi No:109A/58 06790-  
Etimesgut / ANKARA